



PEDESTAL PUMPS 080 GROUP



MODEL 50320-2001

DESIGN FEATURES

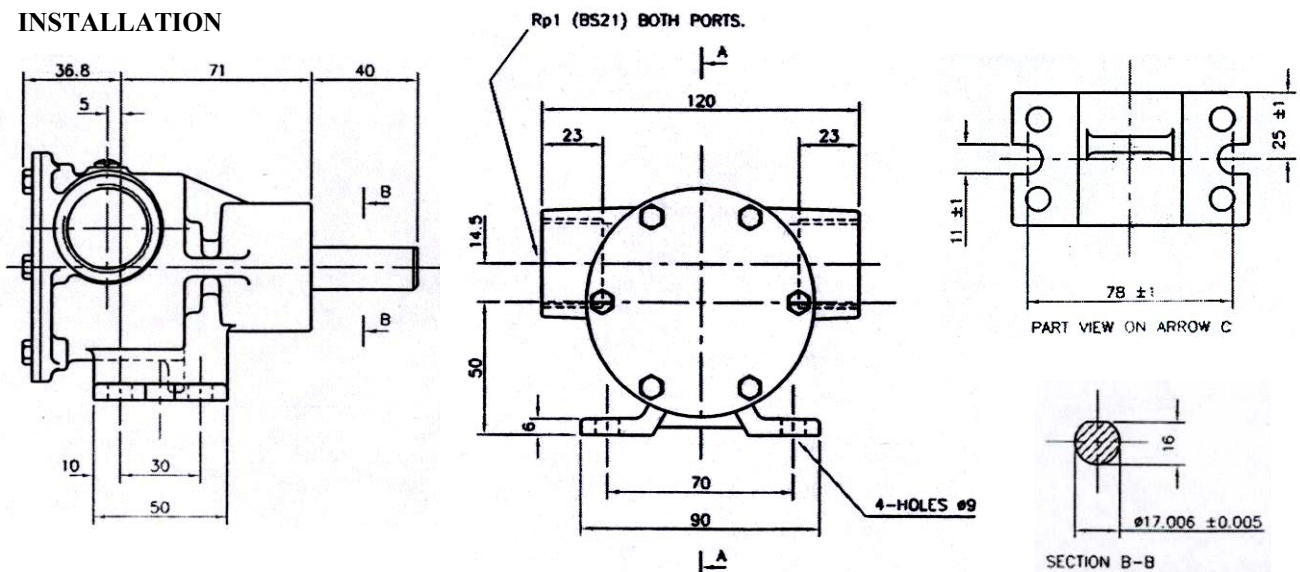
Body	Bronze
Impeller	Jabco Neoprene Compound
Shaft Seal	Lip Seal
Bearing	Two Ball Bearings
Shaft	Stainless Steel 316 S31 to BS970
Ports	1" BSP (BS21/DIN 2999)
Weight	3 Kg

DO NOT USE for Toluene, Petrol, Benzene, or other light fraction Petroleum products

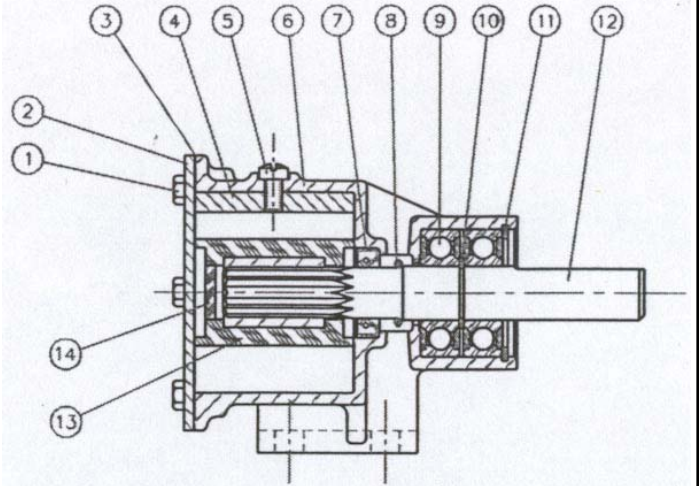
PERFORMANCE

Performance Water at 20°C	Total Manometric Head mH ₂ O	500 RPM 180 Watt	750RPM 180 Watt	1000 RPM 250 Watt	1500 RPM 550 Watt	2000 RPM 750 Watt	2250 RPM 750 Watt
	mH ₂ O	L/min	L/min	L/min	L/min	L/min	L/min
3	26,5	40	53	80	107	120,5	
6	24,5	37,5	51	78	104	118	
9	21	34,5	47,5	74	100	113,5	
12	16,5	29	42,5	68	94	107	
15	-	23	36	61	86	99	
18	-	-	28	52,5	77	89,5	
21	-	-	-	42	66	78	
24	-	-	-	-	-	64,5	
	Suction pipe	Ø 25 mm	Ø 25 mm	Ø 25 mm	Ø 25 mm	Ø 32 mm	Ø 32 mm
	Temperature °C	Metres	Metres	Metres	Metres	Metres	Metres
Maximum recommended Suction Head in mH ₂ O at water temperatur °C	20	7,2	6,9	6,2	4,1	2,2	0,5
	30	7	6,7	6	3,9	2	0,3
	40	6,6	6,3	5,6	3,5	1,6	
	50	6	5,7	5	2,9	1	

INSTALLATION



PARTS LIST			
Key	Description	Qty.	Part No.
1	Endcover Screws	6	X3001-147F
2	Endcover	1	3993
3	Gasket	1	890
4	Cam	1	934
5	Cam Screw	1	SP1004-09
6	Body	1	50324-2000
7	Seal	1	SP2700-1027
8	O-ring slinger	1	X4020-215A
9	Ball bearing	2	SP2600-12
10	Retaining ring shaft	1	SP1701-4437
11	Retaining ring housing	1	SP1700-284
12	Shaft	1	50327-0000
13	Spline seal	1	4345
14	Impeller	1	920-0001



SERVICE INSTRUCTIONS

Dis-Assembly Inspect all parts for wear or damage and replace if necessary

1. Remove endcover screws, endcover and gasket.
2. Remove impeller.
3. Loosen cam screw and remove cam, (clean off old jointing compound).
4. Remove lip seal from body.
5. Insert screwdriver between O.D. of outer bearing seal and pump bore and pry out seal.
6. Remove bearing retaining ring.
7. Press on impeller drive end of shaft to remove shaft and bearing assembly.
Heating outside of body will ease dis-assembly.
8. Remove bearing to shaft retaining ring.
9. Supporting bearing inner race, press shaft through bearing.
10. Using extreme care not to mar body bore, insert screwdriver between O.D. of inner bearing seal and pump bore and pry out the seal.

Assembly

1. Lubricate inner bearing seal with grease and press into body bearing seal bore with lip facing away from bearing bore.
2. Support shaft and press bearing onto shaft.
3. Install bearing to shaft retaining ring with flat side towards bearing.
4. Position slinger in body drain area. Insert splined end of shaft through bearing bore and guide slinger over shaft until bearing contacts body.
5. Press on bearing outer face, install bearing into bore.
6. Install bearing to body retaining ring in body groove with flat side towards bearing.
7. Lubricate outer bearing seal with grease and press into bearing bore until it is flush with the body (spring facing outwards).
8. Lubricate O.D. and lip of seal, then push into place, using care not to damage or cut seallip, (lip faces impeller bore).
9. Coat camscrew threads, and top of cam with a non setting jointing compound and install in body with the cam screw.
10. Lightly grease impeller bore and start impeller into bore with a rotary motion until splines engage, then push into bore.
11. Install gasket and endcover, and secure with endcover screws.

ITT JABSCO

Bingley Road, Hoddesdon, Hertfordshire EN11 OBU, England.
Tel. NO.: +44-(0)1992-450145. Fax No.: +44-(0)1992-467132.